

PRODUCT SHEET

Sage Enterprise Intelligence

One solution for business intelligence and data management.

sage 300cloud



Sage Enterprise Intelligence (SEI) is a fully integrated business intelligence and data management solution that helps organizations make informed decisions based on real-time data. It empowers all users with a simple interface to access and analyze data in a self-sufficient manner and eliminates the need for disparate tools and specialized skills.

Gain visibility and insight

Measure the performance of your organization and the different factors that impact your business and make data-driven decisions faster. With SEI, you get access to your data in real-time from any device, on any platform like web, mobile, and Excel, and in multiple languages. An intuitive interface allows you to navigate through views, dashboards, and reports. The SEI Excel add-in combines the robust capabilities of Excel with the power of SEI and eliminates time spent on manual tasks.

Empower all users

SEI empowers all employees, technical and non-technical, and removes the barrier of relying on IT to provide users with the reports they need to do their job. With a few clicks, you can create and customize views for your specific requirements. Manipulate your enterprise data with easy-to-use features like filters, pivots, ranks, and KPIs. Analyze your data in the most meaningful way, with over 100 visualizations and flexible reporting with advanced calculations and customization options.

Collaborate securely

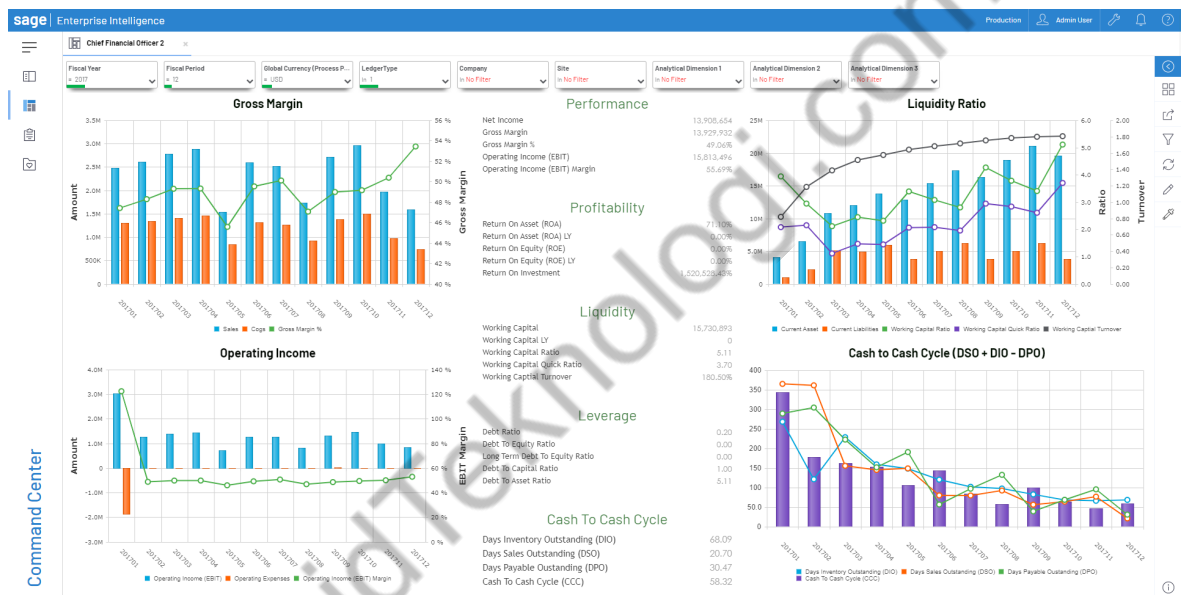
SEI provides a suite of collaboration tools to help you share the right information with internal and external stakeholders. You can schedule the distribution of reports and determine what information each recipient will be able to access, so they only see what they need to. You can also annotate your reports before sharing, to draw attention to critical information. And with automatic distribution, you can get access to advanced features such as conditional alerts, data security, reporting packs, and more.

Manage your data

Manage data from multiple sources and locations using the extract, transform, load (ETL) process that blends data and prepares it for analysis and reporting in SEI. With SEI DataSync, you can cut down on the time and costs of additional labor or tools for prepping or cleaning data and continue to make business decisions on data that you can trust. Migrate data from legacy or third-party systems, consolidate data between disparate databases and centralize data into a data warehouse.

Achieve quick ROI

Why develop complex data models when SEI provides out-of-the-box views and dashboards tailored to your ERP system? These pre-configured templates require minimal set-up and are ready to use from day one. Our Universal Data Models can consolidate and access large amounts of data and provide KPIs for Finance, Sales, Inventory, and CRM. Whether you use the predefined reports, or choose to create your own, SEI has everything you need to analyze your enterprise's performance.



Key features

BUSINESS INTELLIGENCE

- Real-time reporting
- Pre-built templates for views, dashboards, and reports
 - Drilldown
 - Slice and dice
 - Filtering and sorting
 - Conditional formatting
- Excel add-in
- Sales forecasting and financial budgeting
- Data modeling
- Universal Data Models
- Report export (CSV, XLSX, XML, PDF, HTML)
- Available through web, mobile and Excel
- Embedded analytics
- Available on-premises or in the cloud

DATA MANAGEMENT

- Data warehousing
- Data prepping using ETL
 - Filtering and transformation
 - Addition of calculated fields
- Multi-source consolidation
- Migration of legacy systems
- Export to flat file
- Multiple data connectors (on-premises or cloud)
- Full and incremental data refresh
- Includes extraction templates

For more info, visit: www.sage.com/en-us/products/enterprise-intelligence/

